



## Stock – Aspheric Lenses

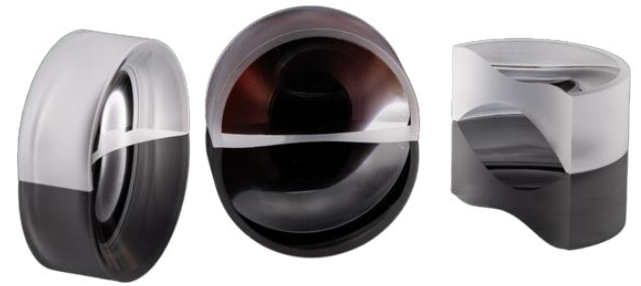
### Aspheric Lenses

Part Number	Focal Length (mm)	Back Focal Length (mm)	Diameter (mm)	Thickness (mm)	Material	Price (USD)
AVTJF-0001	3.1	1.9	5	2	H-F4	\$20.00
AVTJF-0002	3.7	2.4	5	2	H-K51	\$20.00
AVTJF-0003	4	1.4	5	3.9	H-K51	\$20.00
AVTJF-0004	5.6	3.3	8	4	H-ZK2	\$20.00
AVTJF-0005	6	4.2	6.7	2.8	H-K51	\$20.00
AVTJF-0006	6.5	3.2	10	5	H-K51	\$20.00
AVTJF-0007	6.6	4.3	7.5	3.5	H-K51	\$20.00
AVTJF-0008	7.4	4.8	8.5	4	H-K51	\$20.00
AVTJF-0009	7.5	4.6	12	5.5	H-K51	\$20.00
AVTJF-0010	7.6	4	13	6.3	H-K51	\$20.00
AVTJF-0011	8	3.5	10	6.8	H-K51	\$20.00
AVTJF-0012	8	3.7	12.7	7.5	H-K51	\$20.00
AVTJF-0013	8.1	2.9	15	8.5	H-K51	\$20.00
AVTJF-0014	8.3	5.6	16	7	H-K9L	\$25.00



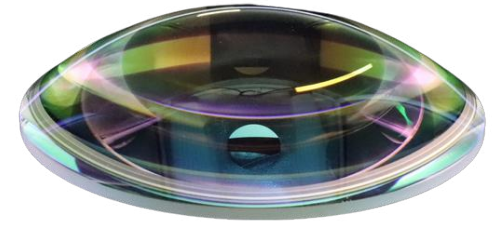
## Stock – Aspheric Lenses

Part Number	Focal Length (mm)	Back Focal Length (mm)	Diameter (mm)	Thickness (mm)	Material	Price (USD)
AVTJF-0015	8.5	8	12	5.6	H-K51	\$30.00
AVTJF-0016	9	8	6.3	1.7	H-K51	\$20.00
AVTJF-0017	10	4.9	12.5	7.7	H-K51	\$20.00
AVTJF-0018	10.4	7.4	12	5.6	H-K51	\$20.00
AVTJF-0019	10.5	7.2	12	6	H-K51	\$20.00
AVTJF-0020	11	6	16	8	H-F4	\$20.00
AVTJF-0021	11.1	5	19.9	10.9	H-K51	\$25.00
AVTJF-0022	12	6.3	15	8.6	H-K51	\$20.00
AVTJF-0023	12.4	9.5	12	4.5	H-K51	\$20.00
AVTJF-0024	12.5	7.1	20	9	H-ZF2	\$200.00
AVTJF-0025	13.5	8.6	18	7.4	H-K51	\$20.00
AVTJF-0026	14	10.2	12.9	5.7	H-K9L	\$20.00
AVTJF-0027	15	10	20	9	H-K51	\$20.00
AVTJF-0028	15.3	14.6	24	9	H-F3	\$25.00



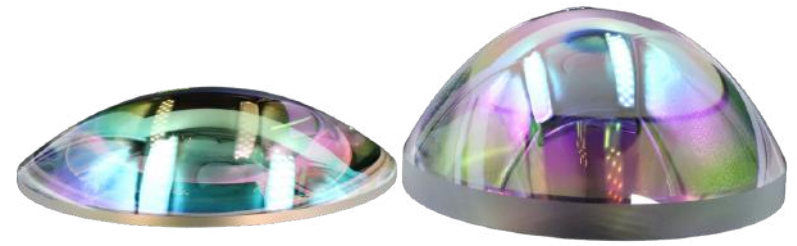
## Stock – Aspheric Lenses

Part Number	Focal Length (mm)	Back Focal Length (mm)	Diameter (mm)	Thickness (mm)	Material	Price (USD)
AVTJF-0029	15.3	10.7	18	7	H-K9L	\$25.00
AVTJF-0030	16	9.1	20	10.5	H-K51	\$20.00
AVTJF-0031	16	7.3	25.4	14	H-K51	\$25.00
AVTJF-0032	16.3	10.4	20	9	H-K9L	\$200.00
AVTJF-0033	16.4	12.8	20	6.4	H-K51	\$20.00
AVTJF-0034	16.7	9.5	24.9	11	H-K51	\$20.00
AVTJF-0035	17.4	12.2	20	8.3	H-K51	\$20.00
AVTJF-0036	18	11.2	24	10.4	H-K51	\$25.00
AVTJF-0037	18.3	11.4	30	14	H-K51	\$25.00
AVTJF-0038	19	15.7	12	5	H-K51	\$20.00
AVTJF-0039	19.4	14.5	26	9.1	H-K51	\$25.00
AVTJF-0040	19.7	12.9	24	10.4	H-K51	\$25.00
AVTJF-0041	19.9	11.8	25	12.3	H-K51	\$20.00
AVTJF-0042	21.6	11	34.9	19	H-K51	\$25.00



## Stock – Aspheric Lenses

Part Number	Focal Length (mm)	Back Focal Length (mm)	Diameter (mm)	Thickness (mm)	Material	Price (USD)
AVTJF-0043	23.5	15	32.5	13.5	H-K51	\$25.00
AVTJF-0044	24	14.7	30	14.1	H-K51	\$20.00
AVTJF-0045	25	19.4	25	8.5	H-K51	\$20.00
AVTJF-0046	25.6	16.7	30	13.5	H-K51	\$20.00
AVTJF-0047	26.8	20.2	30	10	H-K51	\$25.00
AVTJF-0048	28.5	18.6	40	15	H-K9L	\$40.00
AVTJF-0049	29.4	20.3	35	13.9	H-K51	\$30.00
AVTJF-0050	29.5	20.9	40	15.5	H-K9L	\$40.00
AVTJF-0051	30	19	38.4	19	H-K51	\$25.00
AVTJF-0052	32	17	50.8	25	H-K51	\$30.00
AVTJF-0053	32	20.9	45	18.5	H-K51	\$30.00
AVTJF-0054	32	20.3	40	11.8	H-K51	\$20.00
AVTJF-0055	35.8	24.8	50	16.7	H-K51	\$35.00
AVTJF-0056	39.8	25.6	60	26	H-K51	\$45.00



## Stock – Aspheric Lenses

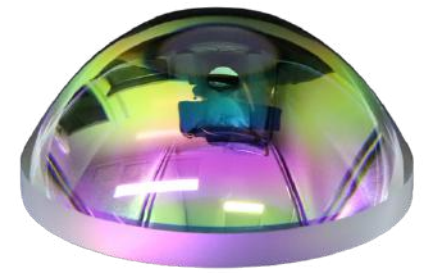
Part Number	Focal Length (mm)	Back Focal Length (mm)	Diameter (mm)	Thickness (mm)	Material	Price (USD)
AVTJF-0057	40	26	50	21.4	H-K51	\$25.00
AVTJF-0058	49.2	29.5	75	30	H-K51	\$45.00

Also available in volume pricing, please contact Avantier for details.

## Uncoated Aspheric Lenses

Part Number	Dia. (mm)	EFL (mm)	NA	BFL (mm)	Substrate	Centering (arcmin)	CA (mm)	ET (mm)	CT (mm)	f/#	Shape of Back Surface	Wavelength Range (nm)	Price (USD)
AVTMF-0001	10.00 +0.0/-0.1	10.00 @ 587.6nm	0.5	7.48	L-BAL35	≤5	9	1.69	4.00 ±0.1	1	Plano	330 – 2400	\$170.00
AVTMF-0002	10.00 +0.0/-0.1	7.50 @ 587.6nm	0.67	4.51	N-SF5	≤5	9	2.21	5.00 ±0.1	0.75	Plano	380 – 2500	\$170.00
AVTMF-0003	12.50 +0.0/-0.1	12.50 @ 587.6nm	0.5	9.35	L-BAL35	≤5	11.25	2.11	5.00 ±0.1	1	Plano	330 – 2400	\$190.00
AVTMF-0004	12.50 +0.0/-0.1	9.50 @ 587.6nm	0.66	6.51	N-SF5	≤5	11.25	1.6	5.00 ±0.1	0.76	Plano	380 – 2500	\$190.00
AVTMF-0005	15.00 +0.0/-0.1	22.50 @ 587.6nm	0.33	19.98	L-BAL35	≤5	13.5	1.8	4.00 ±0.1	1.5	Plano	330 – 2400	\$210.00
AVTMF-0006	15.00 +0.0/-0.1	18.75 @ 587.6nm	0.4	15.92	L-BAL35	≤5	13.5	1.82	4.50 ±0.1	1.25	Plano	330 – 2400	\$210.00
AVTMF-0007	15.00 +0.0/-0.1	15.00 @ 587.6nm	0.5	11.54	L-BAL35	≤5	13.5	2.04	5.50 ±0.1	1	Plano	330 – 2400	\$210.00
AVTMF-0008	15.00 +0.0/-0.1	11.25 @ 587.6nm	0.66	6.85	L-BAL35	≤5	13.5	1.94	7.00 ±0.1	0.75	Plano	330 – 2400	\$210.00
AVTMF-0009	15.00 +0.0/-0.1	9.00 @ 587.6nm	0.83	4.81	N-SF5	≤5	13.5	1.35	7.00 ±0.1	0.6	Plano	380 – 2500	\$320.00

\*Dia. = Diameter



## Stock – Aspheric Lenses

Part Number	Dia. (mm)	EFL (mm)	NA	BFL (mm)	Substrate	Centering (arcmin)	CA (mm)	ET (mm)	CT (mm)	f/#	Shape of Back Surface	Wavelength Range (nm)	Price (USD)
AVTMF-0010	20.00 +0.0/-0.1	20.00 @ 587.6nm	0.5	15.19	L-BAL35	≤5	18	3.44	8.00 ±0.1	1	Convex, R2=200mm	330 – 2400	<b>\$230.00</b>
AVTMF-0011	20.00 +0.0/-0.1	15.00 @ 587.6nm	0.66	9.16	L-BAL35	≤5	18	3.05	9.60 ±0.1	0.75	Convex, R2=200mm	330 – 2400	<b>\$230.00</b>
AVTMF-0012	20.00 +0.0/-0.1	12.50 @ 587.6nm	0.8	7.12	N-SF5	≤5	18	1.91	9.00 ±0.1	0.63	Plano	380 – 2500	<b>\$340.00</b>
AVTMF-0013	25.00 +0.0/-0.1	50.00 @ 587.6nm	0.25	46.54	L-BAL35	≤5	22.5	2.8	5.50 ±0.1	2	Plano	330 – 2400	<b>\$250.00</b>
AVTMF-0014	25.00 +0.0/-0.1	37.50 @ 587.6nm	0.33	33.72	L-BAL35	≤5	22.5	2.3	6.00 ±0.1	1.5	Plano	330 – 2400	<b>\$250.00</b>
AVTMF-0015	25.00 +0.0/-0.1	31.25 @ 587.6nm	0.4	27.16	L-BAL35	≤5	22.5	2.04	6.50 ±0.1	1.25	Plano	330 – 2400	<b>\$250.00</b>
AVTMF-0016	25.00 +0.0/-0.1	25.00 @ 587.6nm	0.5	20.28	L-BAL35	≤5	22.5	1.74	7.50 ±0.1	1	Plano	330 – 2400	<b>\$250.00</b>
AVTMF-0017	25.00 +0.0/-0.1	18.75 @ 587.6nm	0.66	12.46	L-BAL35	≤5	22.5	1.63	10.00 ±0.1	0.75	Plano	330 – 2400	<b>\$250.00</b>
AVTMF-0018	25.00 +0.0/-0.1	15.00 @ 587.6nm	0.83	8.42	N-SF5	≤5	22.5	1.64	11.00 ±0.1	0.6	Plano	380 – 2500	<b>\$375.00</b>
AVTMF-0019	30.00 +0.0/-0.1	30.00 @ 587.6nm	0.5	22.99	L-BAL35	≤5	27	4.81	11.70 ±0.1	1	Convex, R2=300mm	330 – 2400	<b>\$300.00</b>
AVTMF-0020	30.00 +0.0/-0.1	22.50 @ 587.6nm	0.66	13.73	L-BAL35	≤5	27	4.57	14.40 ±0.1	0.75	Convex, R2=300mm	330 – 2400	<b>\$300.00</b>
AVTMF-0021	30.00 +0.0/-0.1	17.50 @ 587.6nm	0.86	9.43	N-SF5	≤5	27	1.78	13.50 ±0.1	0.58	Plano	380 – 2500	<b>\$430.00</b>
AVTMF-0022	40.00 +0.0/-0.1	40.00 @ 587.6nm	0.5	30.68	L-BAL35	≤5	36	6.39	15.50 ±0.1	1	Convex R2=400mm	330 – 2400	<b>\$420.00</b>

\*Dia. = Diameter



## Stock – Aspheric Lenses

Part Number	Dia. (mm)	EFL (mm)	NA	BFL (mm)	Substrate	Centering (arcmin)	CA (mm)	ET (mm)	CT (mm)	f/#	Shape of Back Surface	Wavelength Range (nm)	Price (USD)
AVTMF-0023	40.00 +0.0/-0.1	30.00 @ 587.6nm	0.66	20.6	L-BAL35	≤5	36	2.56	15.50 ±0.1	0.75	Convex R2=400mm	330 – 2400	<b>\$420.00</b>
AVTMF-0024	40.00 +0.0/-0.1	25.00 @ 587.6nm	0.8	15.73	N-SF5	≤5	36	1.49	15.50 ±0.1	0.63	Plano	380 – 2500	<b>\$540.00</b>
AVTMF-0025	50.00 +0.0/-0.1	50.00 @ 587.6nm	0.5	38.33	L-BAL35	≤5	45	8.01	19.40 ±0.1	1	Convex, R=500mm	330 – 2400	<b>\$500.00</b>
AVTMF-0026	50.00 +0.0/-0.1	37.50 @ 587.6nm	0.66	25.74	L-BAL35	≤5	45	3.23	19.40 ±0.1	0.75	Convex, R=500mm	330 – 2400	<b>\$500.00</b>
AVTMF-0027	50.00 +0.0/-0.1	30.00 @ 587.6nm	0.83	18.04	N-SF5	≤5	45	1.44	20.00 ±0.1	0.6	Plano	380 – 2500	<b>\$720.00</b>
AVTMF-0028	75.00 +0.0/-0.1	112.50 @ 587.6nm	0.33	101.42	N-BK7	≤5	67.5	4.13	16.80 ±0.1	1.5	Plano	350 – 2200	<b>\$690.00</b>
AVTMF-0029	75.00 +0.0/-0.1	75.00 @ 587.6nm	0.5	58.25	N-BK7	≤5	67.5	4.99	25.40 ±0.1	1	Plano	350 – 2200	<b>\$690.00</b>
AVTMF-0030	75.00 +0.0/-0.1	60.00 @ 587.6nm	0.63	45.77	N-SF5	≤5	67.5	4.73	23.80 ±0.1	0.8	Plano	380 – 2500	<b>\$690.00</b>
AVTMF-0031	100.00 +0.0/-0.1	150.00 @ 587.6nm	0.33	135.5	N-BK7	≤5	90	5.11	22.00 ±0.1	1.5	Plano	350 – 2200	<b>\$880.00</b>
AVTMF-0032	100.00 +0.0/-0.1	100.00 @ 587.6nm	0.5	78.18	N-BK7	≤5	90	5.9	33.10 ±0.1	1	Plano	350 – 2200	<b>\$880.00</b>
AVTMF-0033	100.00 +0.0/-0.1	80.00 @ 587.6nm	0.63	61.35	N-SF5	≤5	90	5.78	31.20 ±0.1	0.8	Plano	380 – 2500	<b>\$880.00</b>
AVTMF-0034	150.00 +0.0/-0.1	225.00 @ 587.6nm	0.33	204.04	N-BK7	≤5	128	6.46	31.80 ±0.1	1.5	Plano	350 – 2200	<b>\$1,950.00</b>
AVTMF-0035	150.00 +0.0/-0.1	150.00 @ 587.6nm	0.5	118.16	N-BK7	≤5	128	7.51	48.30 ±0.1	1	Plano	350 – 2200	<b>\$1,950.00</b>

\*Dia. = Diameter



## Stock – Aspheric Lenses

Part Number	Dia. (mm)	EFL (mm)	NA	BFL (mm)	Substrate	Centering (arcmin)	CA (mm)	ET (mm)	CT (mm)	f/#	Shape of Back Surface	Wavelength Range (nm)	Price (USD)
AVTMF-0036	150.00 +0.0/-0.1	120.00 @ 587.6nm	0.63	92.86	N-SF5	≤5	128	7.3	45.40 ±0.1	0.8	Plano	380 – 2500	\$1,950.00
AVTMF-0037	200.00 +0/-0.1	300.00 @ 587.6nm	0.33	272.57	N-BK7	≤5	170	7.82	41.60 ±0.1	1.5	Plano	350 – 2200	\$3,700.00

For AVTMF-0001 to AVTMF-0037, the Asphere Figure Error (RMS) is 1.2λ, and the Surface Quality is 60-40.

\*Dia. = Diameter

## High Precision Laser Grade Aspheric Lenses

Fused Silica (Corning 7980) Substrate

Part Number	Description	Compatible Brands	Dia. (mm)	EFL (mm)	NA	BFL (mm)	Centering (arcmin)	CA (mm)	ET (mm)	CT (mm)	f/#	Shape of Back Surface	Unit Price (USD)	Price (USD) *5-9 pcs
AVTGF-0001	25.4mm Dia x 50.8mm FL, 355nm V-Coat	Edmund Optics (39-556)	25.40 +0.00/-0.05	50.80 @ 355nm	0.25	45.39	<1	21.40	4.54	7.98	2	Plano	\$730.00	\$720.00
AVTGF-0002	25.4mm Dia x 50.8mm FL, 532nm V-Coat	Edmund Optics (39-558)	25.40 +0.00/-0.05	50.80 @ 532nm	0.25	45.36	<1	21.40	4.40	7.90	2	Plano	\$825.00	\$800.00
AVTGF-0003	25.4mm Dia x 50.8mm FL, 1064nm V-Coat	Edmund Optics (39-560)	25.40 +0.00/-0.05	50.80 @ 1064nm	0.25	45.03	<1	21.40	4.70	8.40	2	Plano	\$825.00	\$800.00
AVTGF-0004	50.8mm Dia x 101.6mm FL, 355nm V-Coat	Edmund Optics (39-563)	50.80 +0.00/-0.05	101.60 @ 355nm	0.25	97.96	<1	46.80	4.11	10.98	2	Plano	\$950.00	\$925.00





## Stock – Aspheric Lenses

Part Number	Description	Compatible Brands	Dia. (mm)	EFL (mm)	NA	BFL (mm)	Centering (arcmin)	CA (mm)	ET (mm)	CT (mm)	f/#	Shape of Back Surface	Unit Price (USD)	Price (USD) *5-9 pcs
AVTGF-0005	50.8mm Dia x 101.6mm FL, 532nm V-Coat	Edmund Optics (39-565)	50.80 +0.00/-0.05	101.60 @ 532nm	0.25	93.95	<1	46.80	4.10	11.20	2	Plano	\$1125.00	\$1100.00
AVTGF-0006	50.8mm Dia x 101.6mm FL, 1064nm V-Coat	Edmund Optics (39-567)	50.80 +0.00/-0.05	101.60 @ 1064nm	0.25	94.70	<1	46.80	2.69	10.00	2	Plano	\$1125.00	\$1100.00

Also available in volume pricing, please contact Avantier for details.



**AVANTIER**

**EMPOWERING OPTICAL INNOVATIONS**

avantierinc.com

sales@avantierinc.com

AV047-2410B

The content of this publication shall not be reproduced, altered or sold for any commercial purpose without the written approval of Avantier.

Company names, product/service names and logos used in this publication are trademarks and trade names of Avantier or its affiliates.

The information contained herein is provided to you "as is" without warranty of any kind including without limitation warranties as to its accuracy or completeness. Avantier does not assume any responsibility or liability for any damage, whether direct or indirect, relating to the use of this publication. This publication is based upon the information available to Avantier on or before the date of publication, and subject to change without notice.